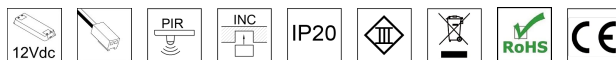


LINE-NEW

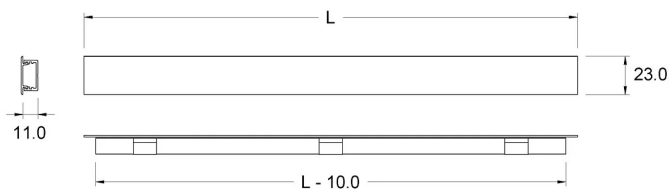


TECHNICAL DATA

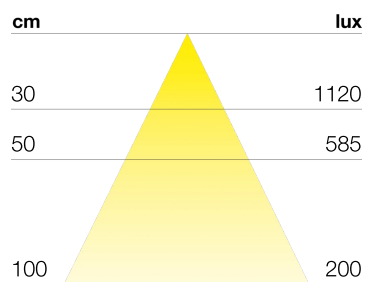
| | |
|------------------------|----------------------|
| Power supply | 12 V |
| Source | SL300 |
| Light colour | 4000 K |
| CRI | >90 |
| Insulation class | III |
| IP grade | IP20 |
| Switch | Sensore di movimento |
| Finish | satinato |
| Photobiological safety | Exempt risk group |
| Output cable | 1800 mm |

Power supply unit not supplied in packaging. Recess drilling L=L-5x20mm R.2.5mm

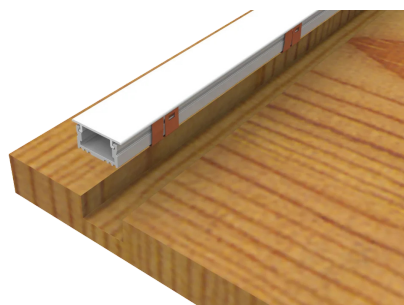
DIMENSIONS



LIGHT DIFFUSION



MOUNTING



LINE-NEW

Integrated presence sensor



PRODUCT CODES

| CODE | LENGTH | POWER | BRIGHTNESS |
|----------|---------|--------|------------|
| 95700693 | 560 mm | 4.5 W | 384 lm |
| 95700694 | 860 mm | 7.5 W | 624 lm |
| 95700695 | 1160 mm | 10.5 W | 864 lm |

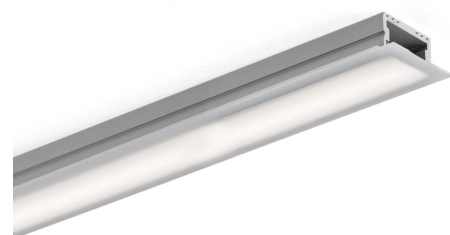


LINE-NEW

Without switch

PRODUCT CODES

| CODE | DESCRIPTION |
|-----------------|-------------------------------|
| xxxxxxxLINE-NEW | Personalizzabile su richiesta |



POSSIBILITÀ DI PERSONALIZZAZIONE PRODOTTO

Lunghezza profilo a misura

Temperatura colore sorgente luminosa

